

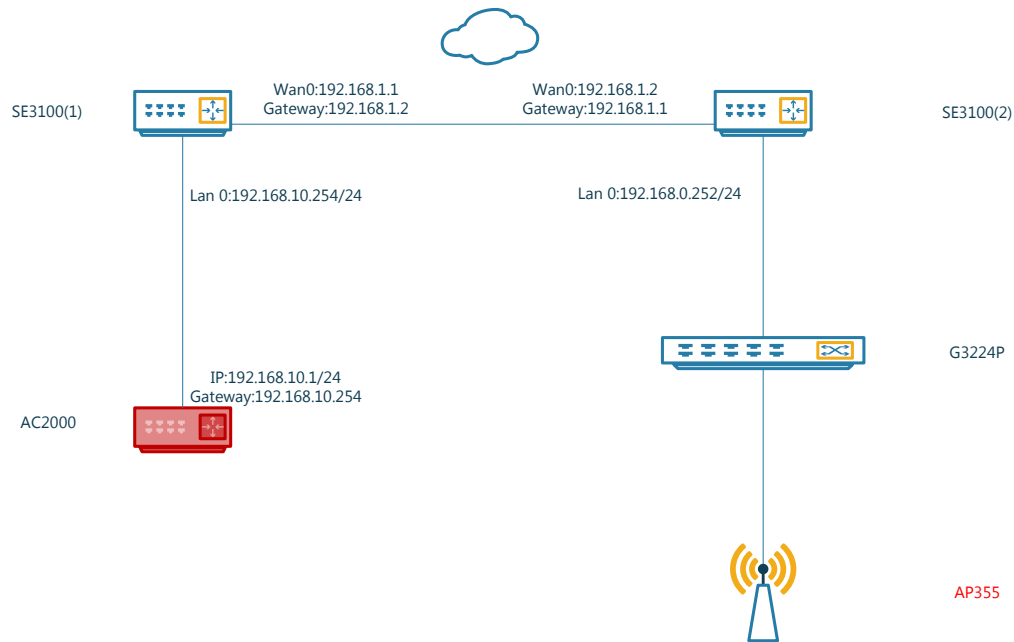
AC2000-Manage AP under Cloud Mode

I. Application

Have centralized management on network equipments (cloud Aps) when they are set in different places.

II. Topology

2 SE3100, 1 AC2000, 1 G3224P, 1 AP355



III. Configuration Steps

1. Connect all equipments as topology shows.
2. Two SE3100 are used to stimulate the equipment connected to internet.
3. Configure IP address of AC2000 as 192.168.10.1/24, configure the gateway of AC2000 as 192.168.10.254.

Management Interface: Network Setting

System Status | **Network Setting** | Maintain | Date&Time | System Log | Network Diagnosis

Internet Settings

IP Address: 192.168.10.1

Subnet Mask: 255.255.255.0

Gateway: 192.168.10.254

Preferred DNS: 8.8.8.8

Alternate DNS:

OK

Setup the system mode of AC2000 as **Cloud AC**, Manage Port: **8888**, Firmware Upgrade Port: **8899**. **Manage port and Firmware Upgrade port can be replaced by others, but the port number should configure the same in cloud AC and cloud AP.**

Management Interface: System Mode

System Mode

Device Name: AC2000V1.0

Working Mode: Sub AC Root AC Cloud AC

Manage Port: 8888

Firmware Upgrade Port: 8899

OK

4. The configurations of SE3100(1):

Wan0: **192.168.1/24**;

Gateway: **192.168.1.2**;

Lan IP: **192.168.10.254/24**.

The connection status shows: **Disconnected**

WAN0

Connection Type: ADSL Dynamic IP Static IP

IP Address:

Subnet Mask:


Default Gateway:

Preferred DNS:

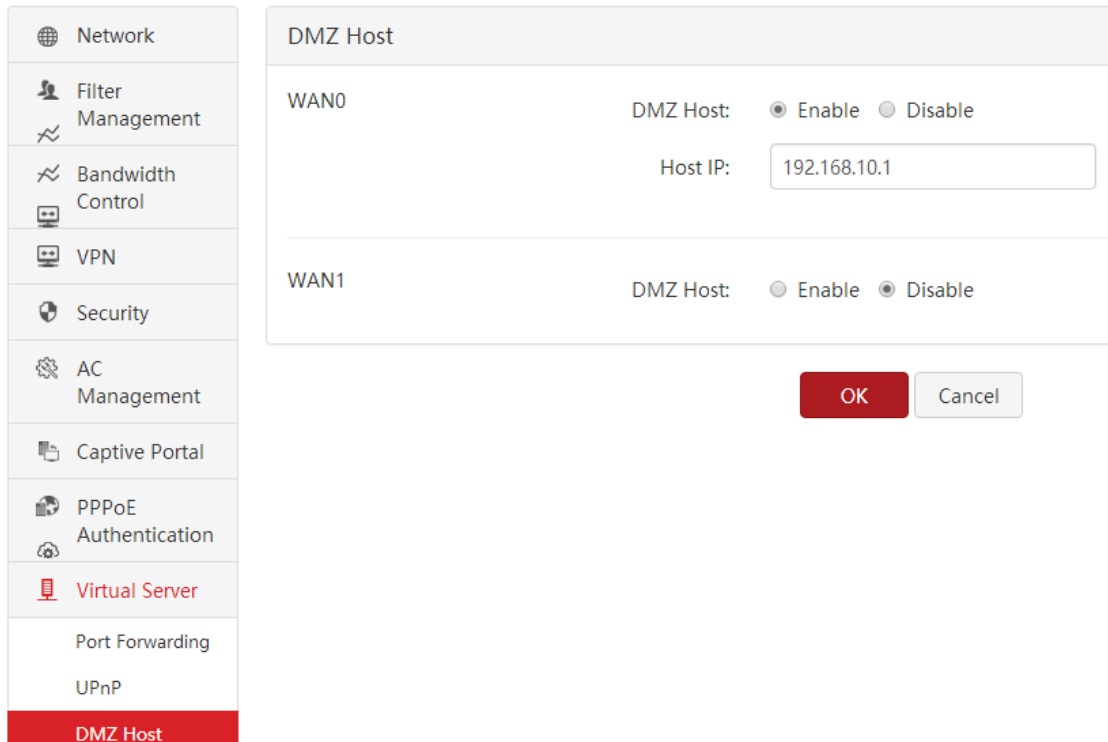
Alternate DNS:

Link Speed: Uplink: Mbps Downlink: Mbps

Connection Status: Disconnected

 Network	LAN Setup
Internet Setup	LAN IP
WAN Parameters	LAN IP: <input type="text" value="192.168.10.254"/>
LAN Setup	Subnet Mask: <input type="text" value="255.255.255.0"/>
Port Mirroring	

The IP address of AC2000 should be bond to the Wan0 of SE3100(1).(we use the DMZ as the instance.)



5. The configuration of SE3100(2):

Wan IP address: **192.168.1.2/24**;

Gateway: **192.168.1.1**;

This time, these two SE3100 will be connected, and the connection status shows:

Connected.

Configure Lan IP address as **192.168.0.252/24**.

WAN0

Connection Type: ADSL Dynamic IP Static IP

IP Address:

Subnet Mask:

Default Gateway:

Preferred DNS:

Alternate DNS:

Link Speed: Uplink: Mbps Downlink: Mbps

Connection Status: Connected

Network	LAN Setup
Internet Setup	LAN IP: <input type="text" value="192.168.0.252"/>
WAN Parameters	Subnet Mask: <input type="text" value="255.255.255.0"/>
LAN Setup	
Port Mirroring	

6. Edit the deployment of AP355 as **Cloud**, type in the Wan IP address or domain name which is binding Cloud AC address. Configure the cloud AC manage port as **8888** and upgrade port as **8899**. **Manage port and Firmware Upgrade port can be replaced by others, but the port number should configure the same in cloud AC and cloud AP.**

Deployment
Deployment: <input type="radio"/> Local <input checked="" type="radio"/> Cloud <input type="button" value="Save"/>
Device Name: <input type="text" value="AP355V1.0"/> <input type="button" value="Restore"/>
Cloud AC Address: <input type="text" value="192.168.1.1"/> <input type="button" value="Help"/> (The WAN IP address or domain name of the router that the Root AC connects to, e.g. www.ip-com.com.cn)
Cloud AC Manage Port: <input type="text" value="8888"/> (Valid Range: 1024~65535)
Cloud AC Upgrade Port: <input type="text" value="8899"/> (Valid Range: 1024~65535)

Make sure the gateway of AP355 should be configured as one of SE3100(2)'s Lan IP address.

Status

Quick Setup

Network

LAN Setup

DHCP Server

Wireless

SNMP

Deployment

Tools

LAN Setup

MAC Address	00:B0:C6:59:CD:A0	Save
Address Mode	Static IP	Restore
IP Address	192.168.0.254 <small>For example: 192.168.1.1</small>	Help
Subnet Mask	255.255.255.0 <small>For example: 255.255.255.0</small>	
Gateway	192.168.0.252	
Primary DNS Server	8.8.8.8	
Secondary DNS Server(optional)		
Device Name	AP355V1.0	
Ethernet Mode	<input checked="" type="radio"/> Auto-negotiation <input type="radio"/> 10M half-duplex	

7. Check whether AP355 can be managed by AC2000 through 'public network'.

Manage Policy

Manage AP

Captive Portal

User Status

User Statistics

System Tools

AP Group Modify
AP Modify

SSID Setting
RF Setting
VLAN Settings
Maintain Setting
Clear Settings
Delete

Total Device: 1 [Refresh](#) Per Page 10

Model	Remark	MAC	SSID	Radio Policy	VLAN Policy	Maintain Policy	Alert Policy	Admin Policy	Deployment Policy	Status
ap355v1.0	AP355V...	00:B0:C6:59:CD:A0	IP-COM_59CDA0	None	None	None	None	None	None	Online

IV. Trouble Shooting

1. Make sure the network does work: use the built-in tool to check the network.

Manage Policy

Manage AP

Captive Portal

User Status

User Statistics

System Tools

Network Tool:

Destination IP/Domain:

Packet Number: 1-32

Packet Size: 32-1464 Unit: Byte

32 bytes from 192.168.1.2: ttl=63 time=1.099

End

2. The firmware version of AC2000 and AP355 should be compatible with each other.

3. Login to the website “canyouseeme.org”, check whether port 8888 and port 8899 opened. If neither these two ports work, change another port number, and the port number should configure the same in AC and AP.
4. The IP address of SE3100's wan port should be public IP in real situation.